



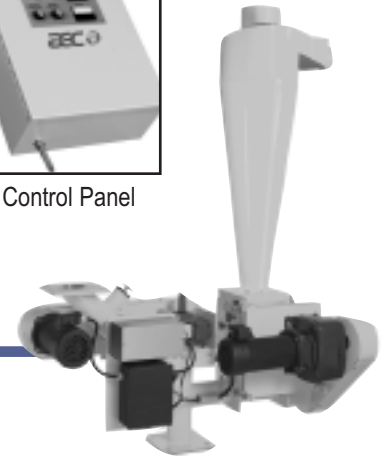
TE SERIES EDGE TRIM FEED HOPPERS

AEC fluff feed hoppers are designed to feed a percentage of the fluff directly back into the extruder throat. The unique dual-stage design ensures that the fluff is mixed with the virgin material above the extruder throat. Each auger is independently adjustable and can be set to follow the extruder screw speed by monitoring a tachometer signal from the extruder. The TE unit is designed to re-feed edge trim only.

TE fluff feed hoppers are designed to feed edge trim back into an extruder at a maximum rate 25% of the extruder output. NOTE: Cannot be used with grooved feed throats.



TE Control Panel



TE 350 (shown with optional cyclone)

STANDARD FEATURES

- NEMA 12 enclosure
- Up to 20% re-feed rate¹
- Machine-mount flange
- Dependable auger metering
- Mild steel material contact surfaces
- IR compensation
- Vertical mix auger, horizontal fluff metering auger
- Extruder following signal isolator
- Individual voltmeters
- Horizontal and vertical drive DC motors (SCR) 180 VDC
- Individual speed adjustments on fluff auger and Verti-Blend mixer
- 230/1/60 supply voltage

¹ Re-feed rate is based on feeding 1 mil, medium slip LDPE film scrap to a die limited extrusion system. If the system is limited by the extruder, some loss in output rate may occur when feeding higher percentages of fluff.

OPTIONAL FEATURES

- Special voltage (please specify)
- High level sensor with delay timer
- 90° feed pedestal
- Special design feed pedestal
- Fluff supply hopper with bottom clean-out door; includes safety switch
- Special mounting flange or throat adapter (extruder throat and flange drawings required)
- Special cyclone hole in fluff hopper cover (exact specifications required)
- Cyclone separators

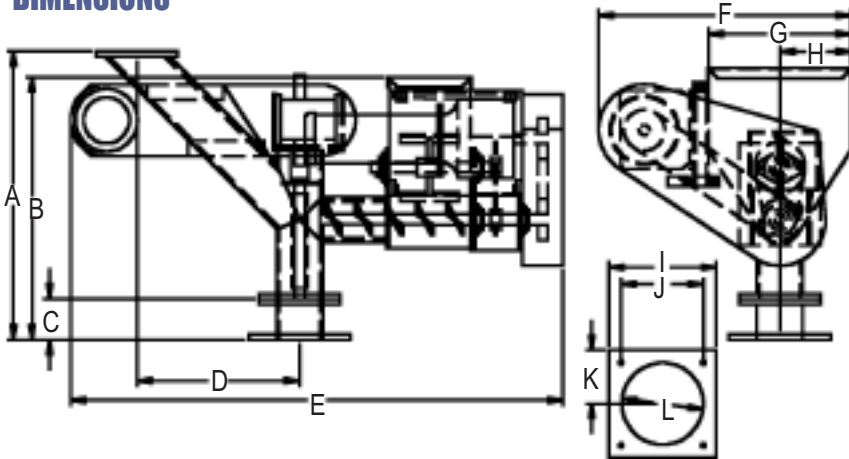
TE SERIES EDGE TRIM FEED HOPPERS

BLEND AND RECLAIM

SPECIFICATIONS

Model	Extruder screw dia., in. (mm)	Horizontal auger		Vertical auger		Drive Type
		Power, HP (kW)	Size/dia., in. (mm)	Power, HP (kW)	Size/dia., in. (mm)	
TE250	2.5 (63)	0.5 (0.373)	1.625 (41.3)	0.5 (0.373)	2.5-1.75 (63.5-44.5)	DC

DIMENSIONS



A	27.75 (70)
B	26.125 (66)
C	4 (10)
D	16 (41)
E	47.375 (120)
F	19.375 (49)
G	8.25 (21)
H	4.125 (10)
I	8 (20.3)
J	6 (15.2)
K	4 (10.2)
L	4 (10.2)

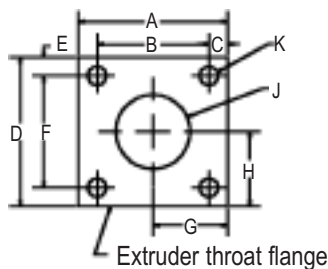
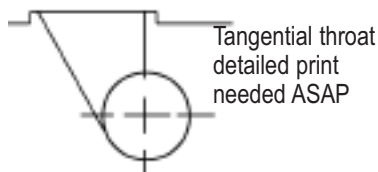
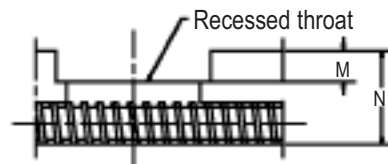
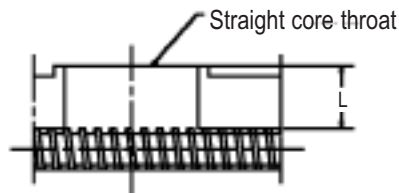
All dimensions are in inches (centimeters)

REQUIRED CUSTOMER EXTRUDER INFORMATION

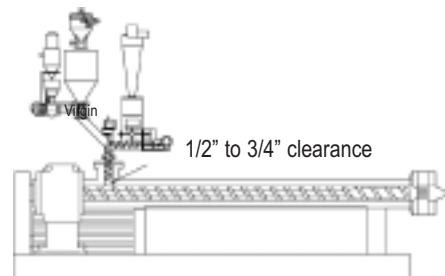
Please provide the following information with confirming order

Make (Manufacturer)	
Model	
Serial No.	
Screw Dia.	in./mm

A	
B	
C	
D	
E	
F	
G	
H	
J	
K	
L	
M	
N	



TYPICAL TE FLUFF FEED HOPPER INSTALLATION



TYPICAL TE SYSTEM CONFIGURATION

