



## VTC10/80 AND 24/128 DISTRIBUTED I/O CONTROLLER

Vacuum conveying has never been more simple or versatile than with AEC's new VacTrac™ Series 10/80 and 24/128 Controller. The VacTrac 10/80 controller from AEC features enhanced graphics and control of up to 10 vacuum conveying pumps, 80 loading stations, and 80 purge valves. The VacTrac 24/128 controller from AEC features enhanced graphics and control of up to 24 vacuum conveying pumps, 128 loading stations and 128 purge valves. The 10/80 and 24/128 controllers utilize a DeviceNet distributed I/O network, and standard features include an Allen-Bradley CompactLogix controller with a 10" color touch-screen operator interface.



VTC10/80 and 24/128

### STANDARD FEATURES

- *Time fill loading*
- *Prioritized station loading*
- *Manifold line sharing*
- *Built-in system diagnostics*
- *Add new equipment and/or equipment options without shutting down the system*
- *Optimized for blender applications*
- *1 optional I/O per hopper (24/128)*
- *Up to 3 optional I/O per hopper (10/80)*

### OPTIONAL FEATURES

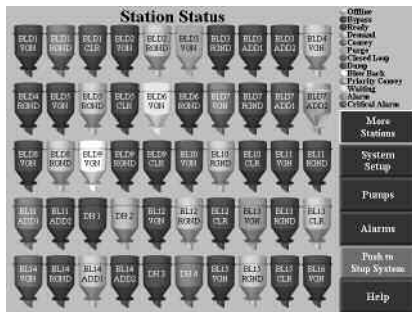
- *Additional touch-screen operator interfaces for multi-location access within the plant*
- *Multiple vacuum pump and filter cleaning options*
- *Line purging capability*
- *Closed loop conveying*
- *Local station On/Off control*
- *Centralized remote proportioning valve control*
- *Blowback filter cleaning at the loading station*
- *Vacuum receiver positive discharge*
- *Volume-fill of vacuum receiver*
- *Low-level indication in supply hoppers*
- *Local and/or centralized alarms*
- *Ethernet capabilities*
- *Supply power noise filter surge/suppressor*
- *Granulator unloading*

# VTC10/80 AND 24/128 CONTROLLER

# MATERIAL HANDLING

## VTC10/80 AND 24/128 CONTROLLER

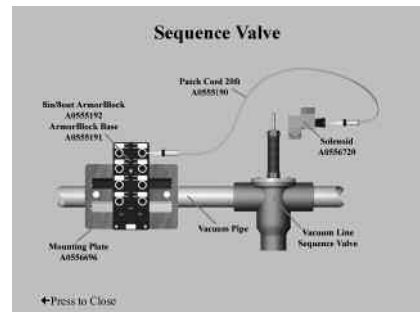
The sample control screens below show how versatile this powerful control platform is. Easy-to-follow graphical touch screens navigate you through total control of this central vacuum system controller.



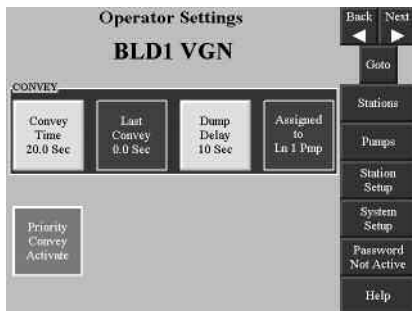
Naming of loading stations, pumps, purge valves and material sources



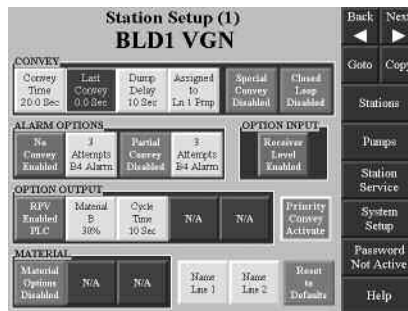
Pump status



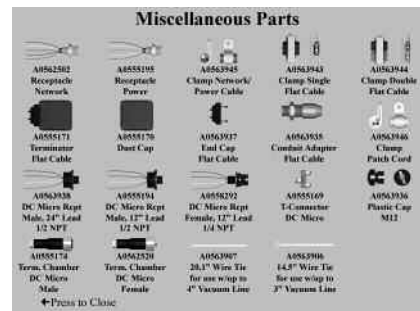
Built-in diagnostics, operating instructions and installation instructions



Operator Screen



Set-up Screen



Spare Parts Screen